



### For immediate release

Ref: Metoc

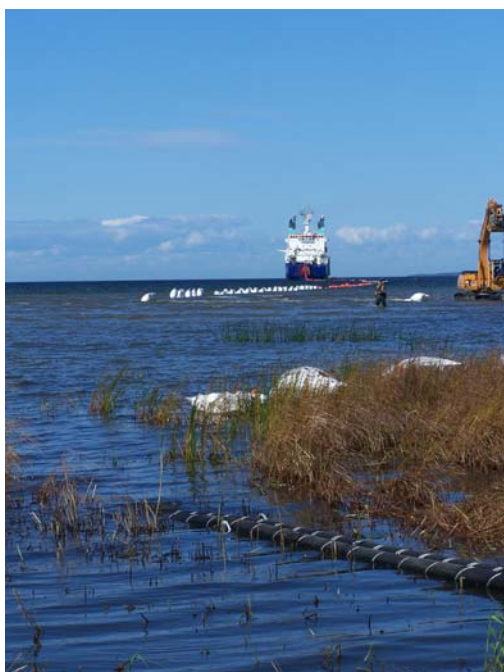
## Metoc assists delivery of Western Isles – Scottish Mainland electricity interconnector

Metoc, a leading environmental engineering consultancy, has been contracted by Scottish Hydro Electric Transmission Limited (SHETL), part of the Scottish and Southern group, to assist with the delivery of the HVDC subsea electricity interconnector between the Western Isles and the Scottish mainland.

Metoc will assist SHETL with technical auditing and supervision of both the cable manufacturer's and installation contractor's work and liaison with other users of the marine environment.

The planned interconnector will serve to convey renewable energy generated on Lewis and Harris to the rest of the UK grid, as part of a series of planned improvements.

Commenting on the project award, Eric Briar, head of Metoc's Marine Planning and Operations, said "This, together with our work with the other transmission system owners in the UK, highlights the key role Metoc continues to play in the planning and delivery of improvements to the UK grid system in the marine environment".



HVDC cable

# NEWS

Ends...

## Note for Editors

UK environment engineers Metoc plc supports industry and Government in the development of infrastructure resources based on a full understanding of the financial, environmental, and engineering issues. The objective is to reduce risks and costs of each project and so maximise the return on investment, whilst minimising the impact on the natural environment.

Metoc has 25 years experience in working worldwide as advisers and project managers on infrastructure projects in the marine, coastal and river environments. This has ensured a detailed understanding of clients' needs and the critical interface where engineering meets the environment.

Capabilities in consent delivery and engineering support, combined with high-level project management experience, enable Metoc to prevent costly dislocation throughout a project's life-cycle.

For further information contact:

Natalie Griggs [natalieg@metoc.co.uk](mailto:natalieg@metoc.co.uk)

Metoc plc, Exchange House, Station Road

Liphook, GU30 7DW Tel: + 44 (0)1428 727800

[www.metoc.co.uk](http://www.metoc.co.uk)

Media information:

Patrick Rea [patrick.rea@rea-tma.co.uk](mailto:patrick.rea@rea-tma.co.uk)

Rea-TMA Marketing

Tel: +44 (0)20 8870 4976

[www.rea-tma.co.uk](http://www.rea-tma.co.uk)